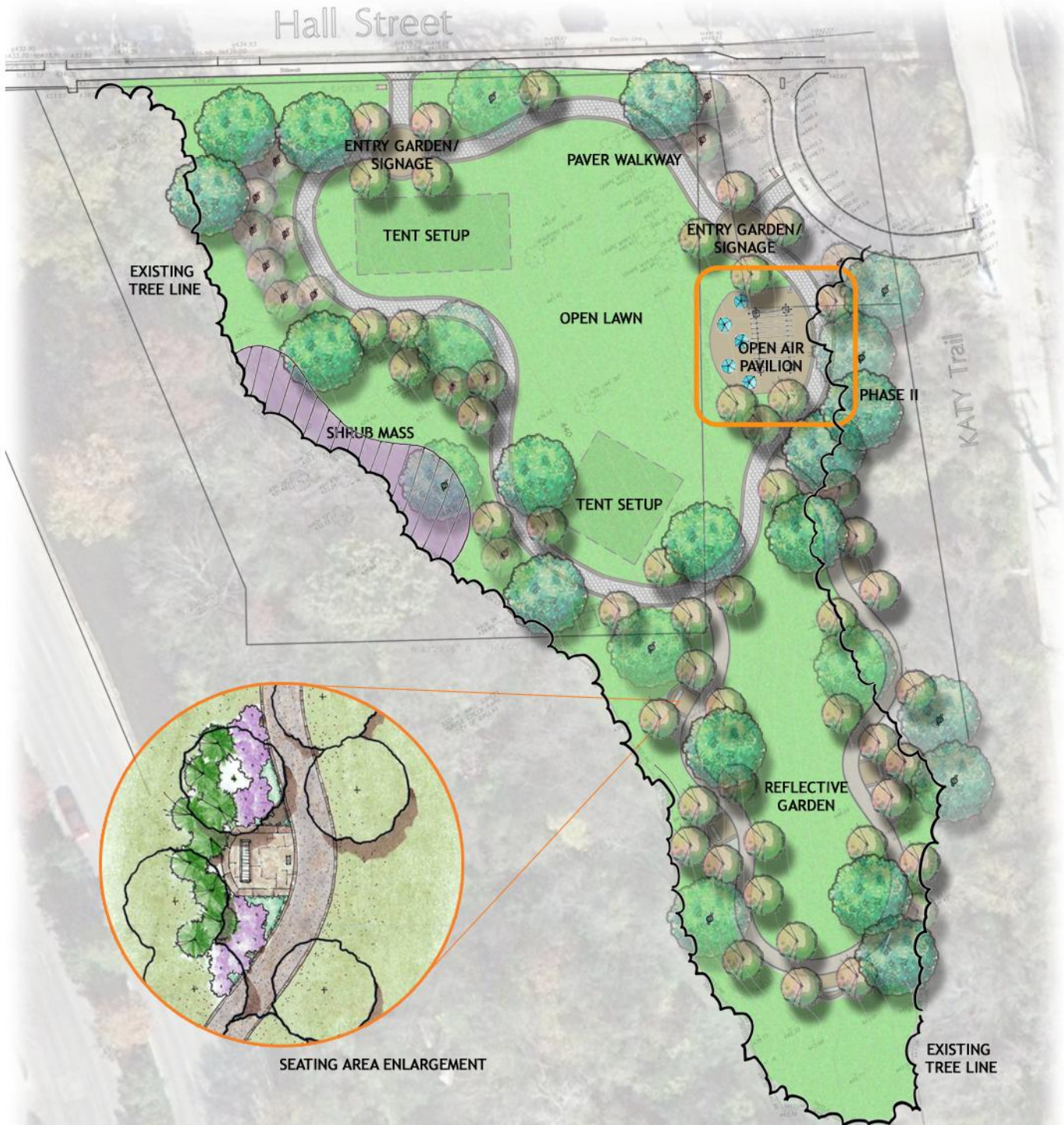


TURTLE CREEK ASSOCIATION



Fine Gardens Since 1919

HALL STREET PARK IMPROVEMENT PROJECT CONCEPTUAL MASTER PLAN

AUGUST 2011

Project Overview

Why engage in the development of the park?

- Additional landscape (including shade trees, ornamental trees, shrubbery and colorful plantings) will add to the beauty, value and appeal of Turtle Creek.
- A “Signature Site” offers a focal point for TCA promotions.
 - Permanent Signage (directional & historical)
 - Donor recognition
 - Events
- The site will offer a meeting point for existing and new TCA activities.
 - Creek Cleanups
 - Nature walks
 - Wildlife photography classes
 - Horticulture/Gardening demonstrations

Why this site?

- The access point to the Katy Trail has made this the center of pedestrian traffic in the Corridor.
- The proximity to Lee Park provides opportunities for collaboration on events.

What will development entail?

- The project is designed to accommodate the existing Turtle Creek community, NOT to attract crowds to the area.
- The design envisions the following features
 - Two tasteful entry points,
 - A large open space area (which will have power and can be utilized for small social events).
 - A walking path which provides opportunity for Katy Trail walkers to visit the Park and return to the Trail.
 - A remote reflective garden with several areas providing seating, shade and solitude.
 - Tree lighting to enhance the beauty and security of the park.

Hall Street

ENTRY GARDEN/
SIGNAGE

PAVER WALKWAY

TENT SETUP

ENTRY GARDEN/
SIGNAGE

EXISTING

AWN

OPEN AIR
PAVILION

PHASE II

TENT SETUP

REFLECTIVE
GARDEN

EXISTING
TREE LINE

Katy Trail



TURTLE CREEK ASSOCIATION

Budget Overview

The project is divided into two phases. Phase 1 includes the features mentioned in the Project Overview. Phase 2 is an optional enhancement that, if pursued, would entail an Open Air Pavilion.

Total costs for Phase 1 are estimated between \$225-\$250,000.
Most of the funding for this phase will come from existing City bond funds.

In 2006, the City authorized \$300,000 for “Reforestation” in Turtle Creek. These funds can be utilized for all costs associated with the planting and maintenance of trees and related “softscape” improvements.

A portion of these bond funds (\$116,000) can also be used on “hardscape” costs (such as the pathway and utilities).

The costs for Phase 2 are estimated between \$115,000-\$150,000.
The funding for this phase would come from bond funds not used in Phase 1 and additional private funding.

